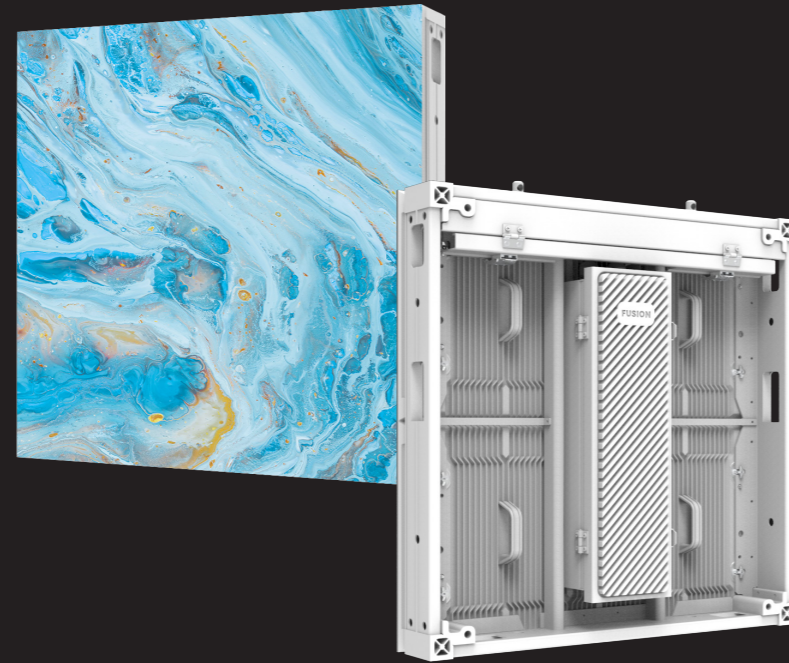


# Fusion Fine

## High-Performance Outdoor Display



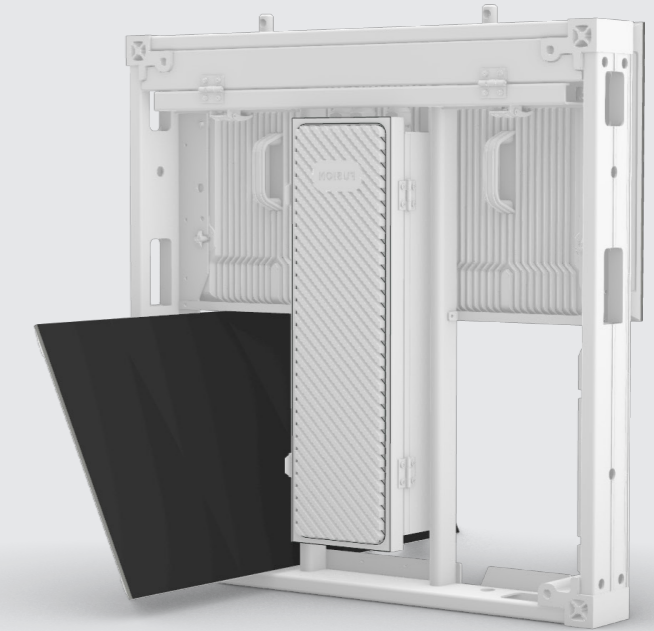
**Pixel Pitch**  
p2.9 | p3.9 | p4.8

**Screen Size**  
500 x 500 mm | 500 x 750 mm | 500 x 1000 mm

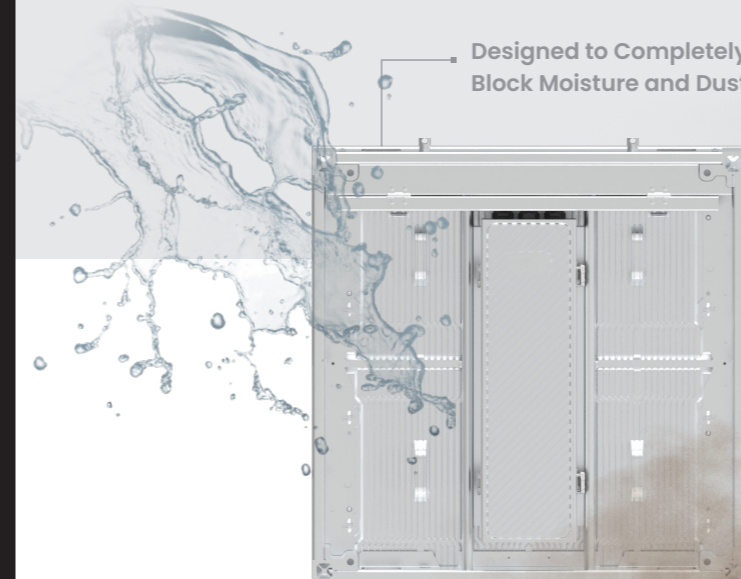
**Usage**  
#Commercial advertising #Extreme Environments

### Easy Design & Convenient Bidirectional Maintenance

With customized on-site maintenance, the space utilization is high, providing excellent installation flexibility even in restricted environments.



Designed to Completely Block Moisture and Dust



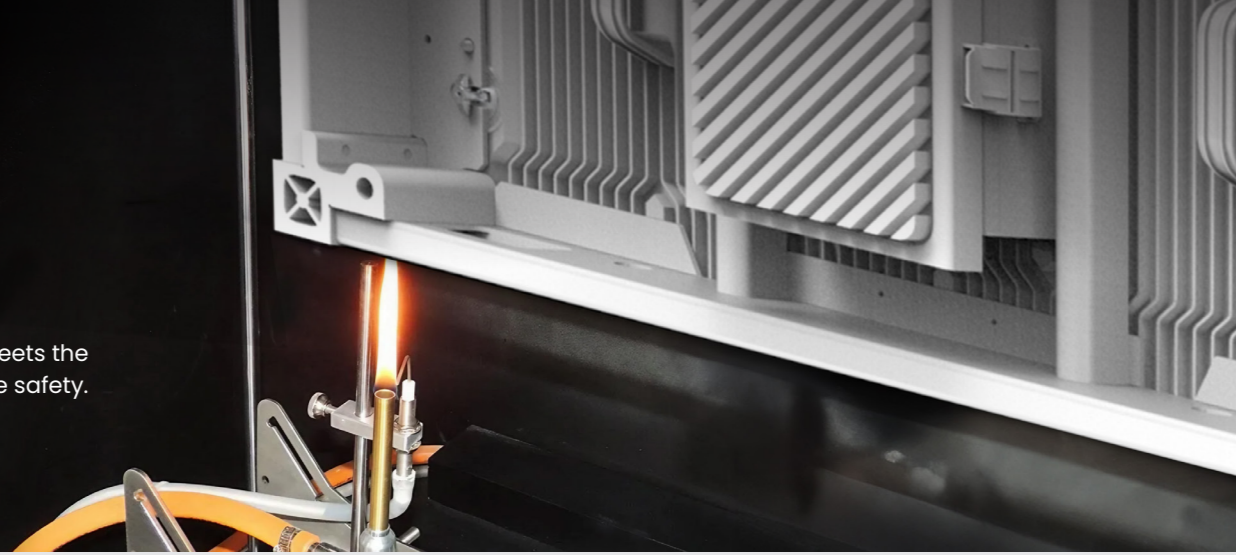
**IP65**

### Seamless Waterproof & Dustproof Protection

Ensures safe usage even in extreme environments. Delivers stable performance regardless of external conditions.

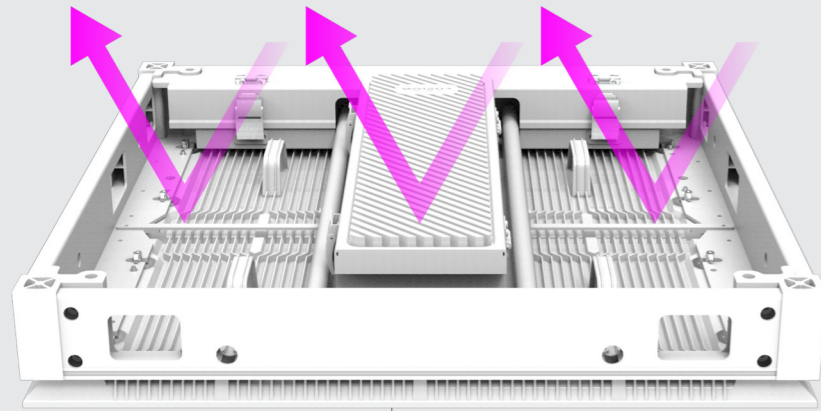
## 5VB Fireproof Rating for Worry-Free Safety

Unlike standard products, Fusion Fine meets the highest 5VB fireproof rating, ensuring fire safety.

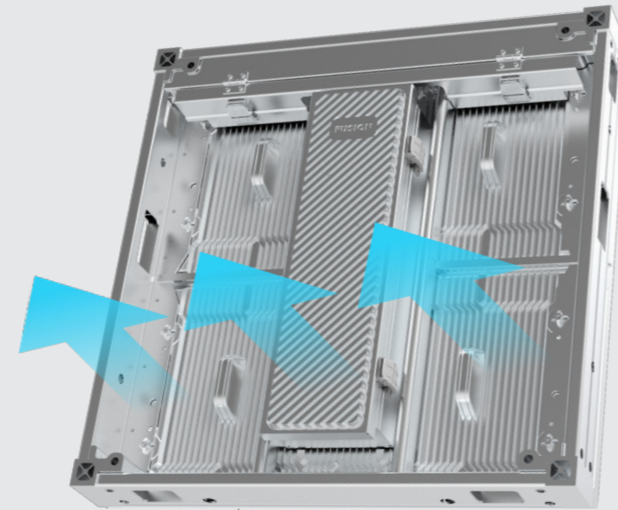


## Dual Thermal Management

With customized on-site maintenance, the space utilization is high, providing excellent installation flexibility even in restricted environments.



Light Reflection White Coating



Full Aluminum Material

## Fusion Fine Specification

Product	Fusion Fine p2.9	Fusion Fine p3.9	Fusion Fine p4.8
Pixel pitch	2.97619 mm	3.90625 mm	4.8076 mm
Brightness	4,500 nit	5,000 nit	5,000 nit
Module size	250 x 250 mm	500 x 250 mm	500 x 250 mm
Module resolution	86 x 86 px	128 x 64 px	104 x 52 px
Panel size	500 x 500, 750, 1,000 mm	500 x 500, 750, 1,000 mm	500 x 500, 750, 1,000 mm
Panel resolution	168 x 336 px (500 x 1,000 mm)	128 x 256 px (500 x 1,000 mm)	104 x 208 px (500 x 1,000 mm)
Refresh rate	3,840 Hz	3,840 Hz	3,840 Hz
Viewing angle	140° (H, V)	140° (H, V)	140° (H, V)
Weight	30 kg / sqm	30 kg / sqm	30 kg / sqm
Working temperature	-30~60°C	-30~60°C	-30~60°C
Humidity	10~90%	10~90%	10~90%
Maintenance	Front & Rear	Front & Rear	Front & Rear
Power consumption	Max. 750   Avg. 250 w/sqm	Max. 650   Avg. 217 w/sqm	Max. 650   Avg. 217 w/sqm
Life span	100,000 hours	100,000 hours	100,000 hours