

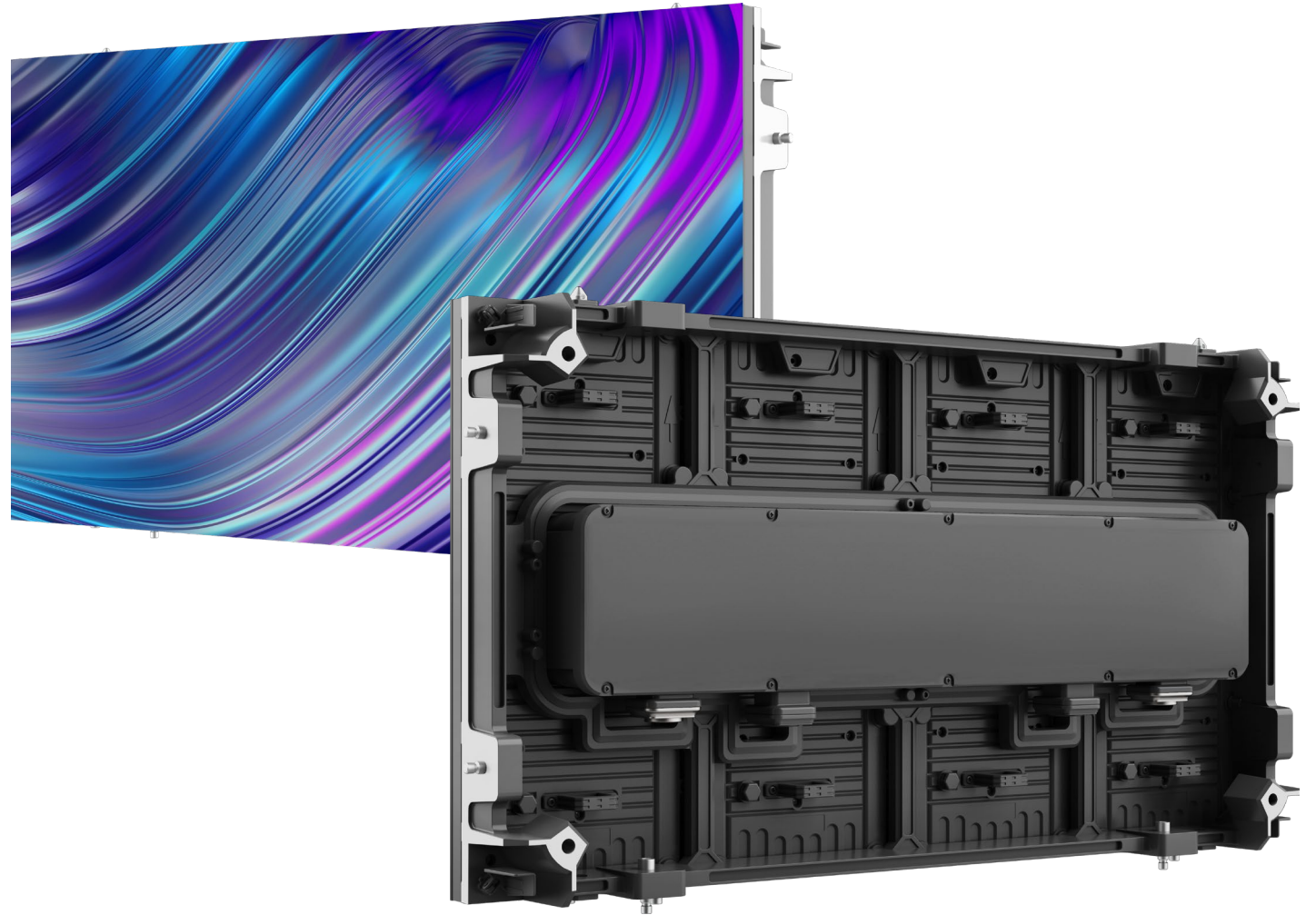
Diamond

Impactrum

Diamond

The Ultimate Black Level

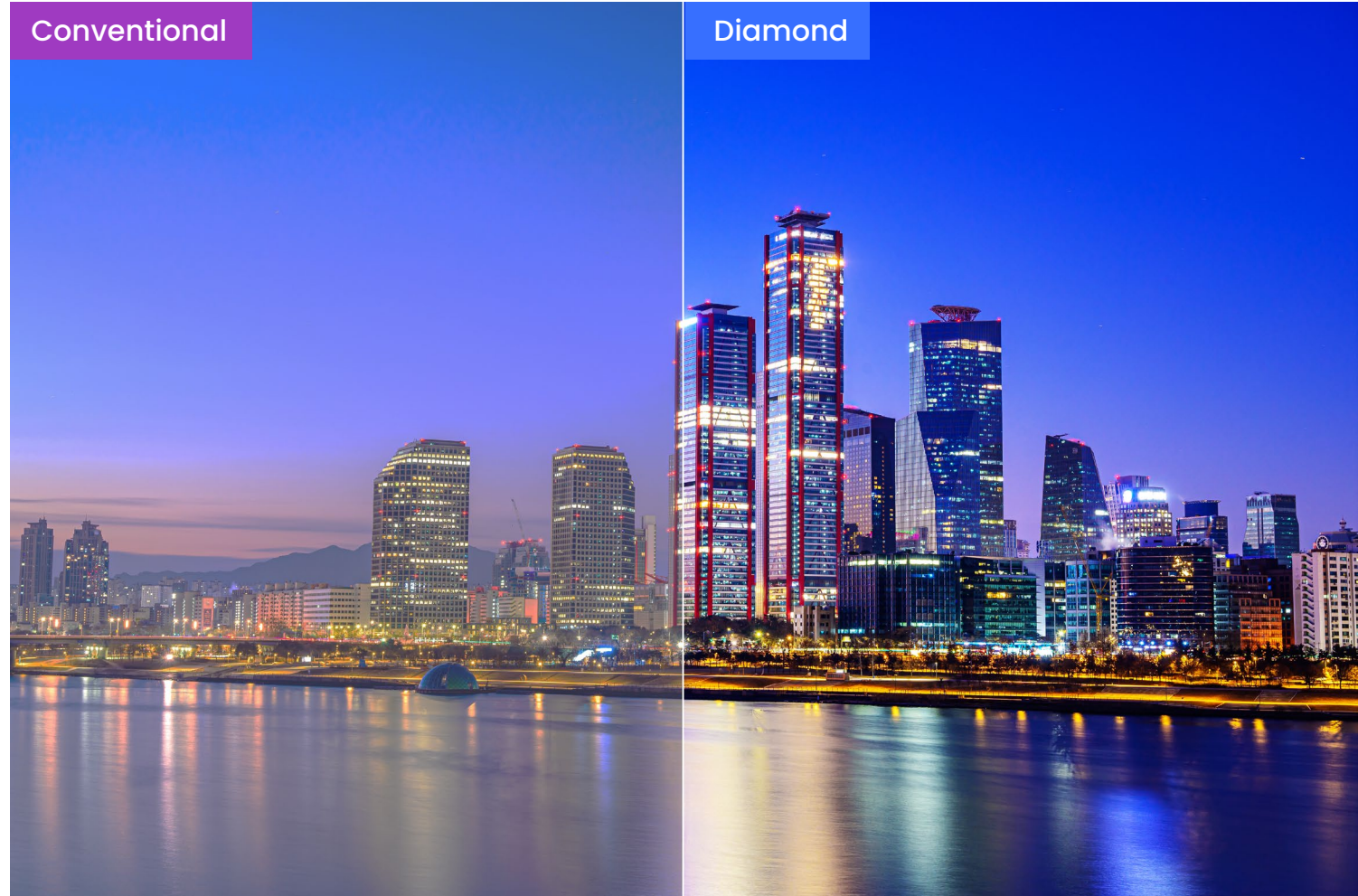
Unparalleled
Extreme Contrast



HyCon 3,000 nit

**A screen that appears twice
as bright as standard products.**

With a sharp contrast ratio, the screen appears more than twice as bright at the same brightness level as standard products, delivering a more vivid image.

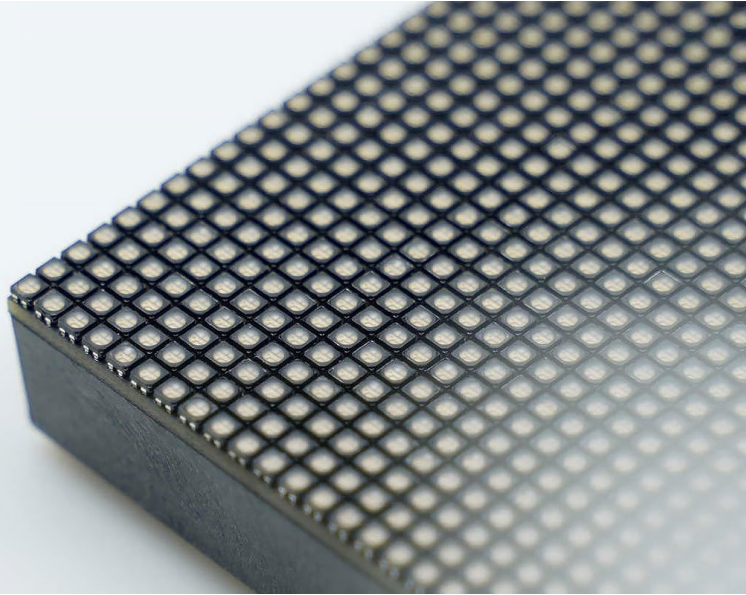


Overwhelming Contrast Ratio 30,000:1

Deep Black Screen

The darkest areas of the screen are displayed as true black, providing outstanding depth, higher clarity, and an even more vivid display.

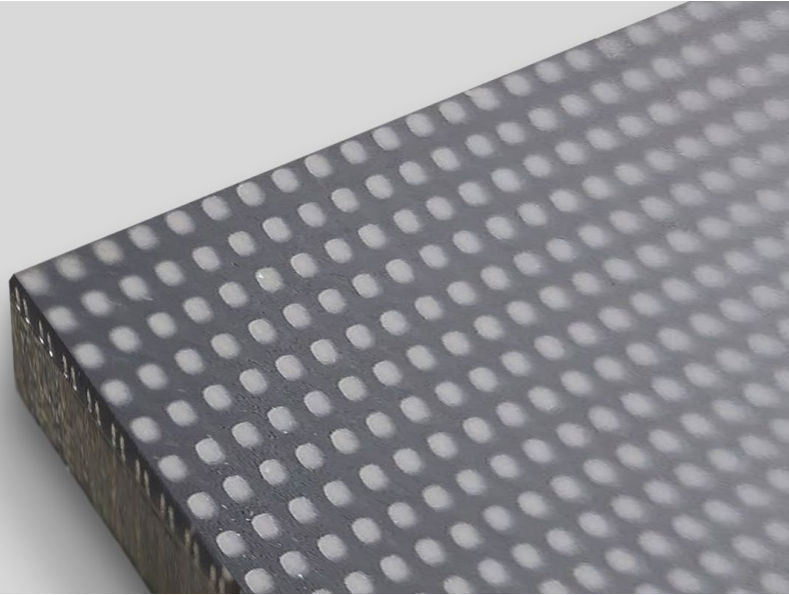




SMD

Surface-Mount-Device

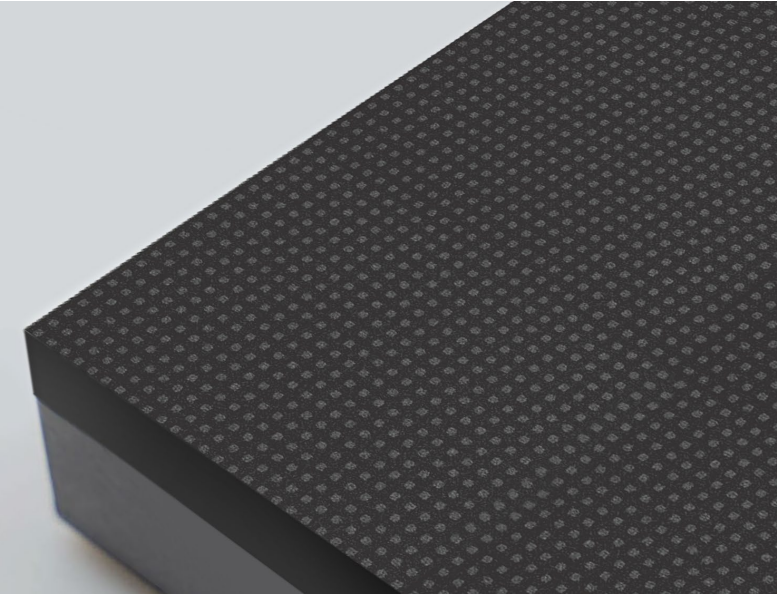
A widely used method where LEDs are mounted directly onto the PCB surface.



GOB

Glue-On-Board

A method where the surface of the SMD module is coated with glue.



COB (Micro LED)

Chip-On-Board

Instead of attaching chips separately, they are integrated as part of the PCB in the packaging process.

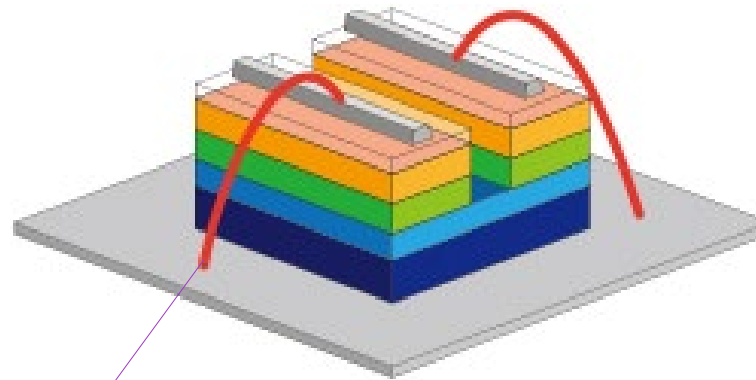
- Durable surface
- Discoloration prevention
- UV protection
- High contrast ratio
- Ultra-small flip-chip lamp
- Low power consumption

No wire

No Wire – Full Flip-Chip Technology Applied

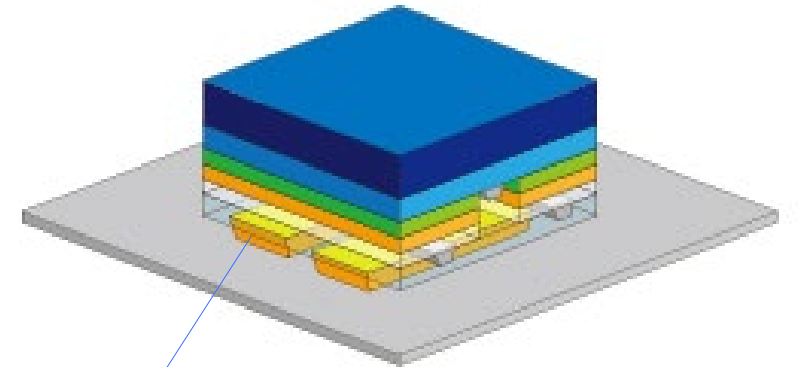
- 30% Lower Power Consumption
- 178° Wide Viewing Angle
- Extremely Slow Aging Process
- High Contrast Ratio
- Minimal Heat Generation
- Long-Term Stability

SMD



Wire

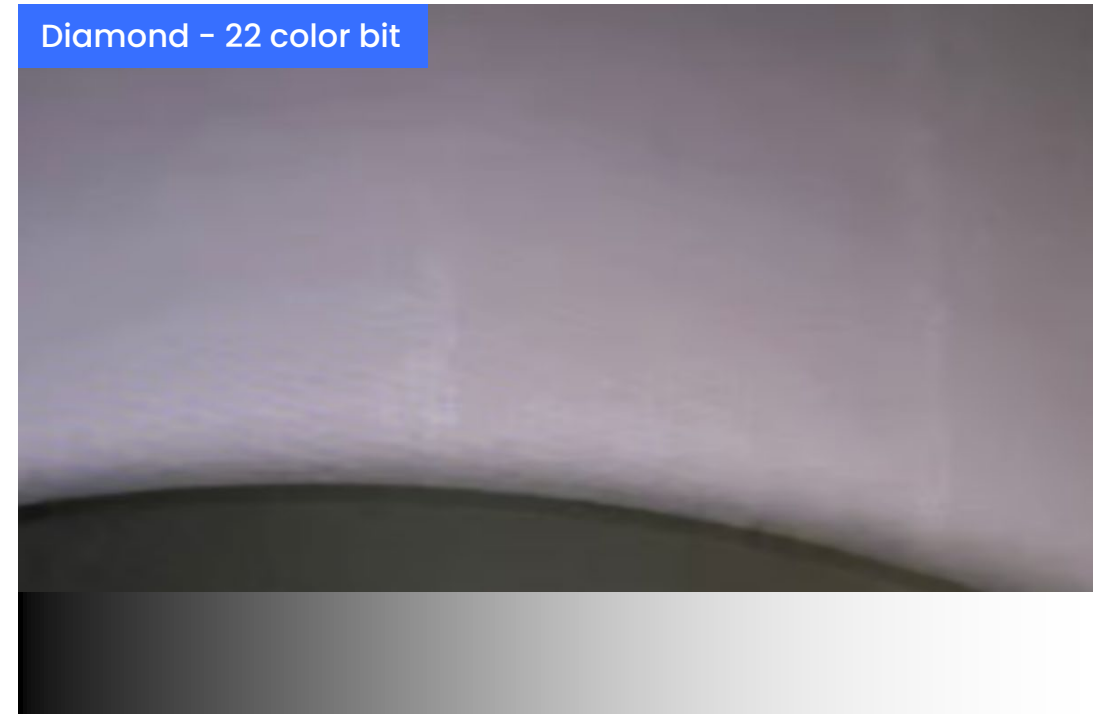
Flip-chip



Direct Bonding
(No wire)

22 color bit

Precise brightness control distinguishes small differences, ensuring extremely smooth gradation.

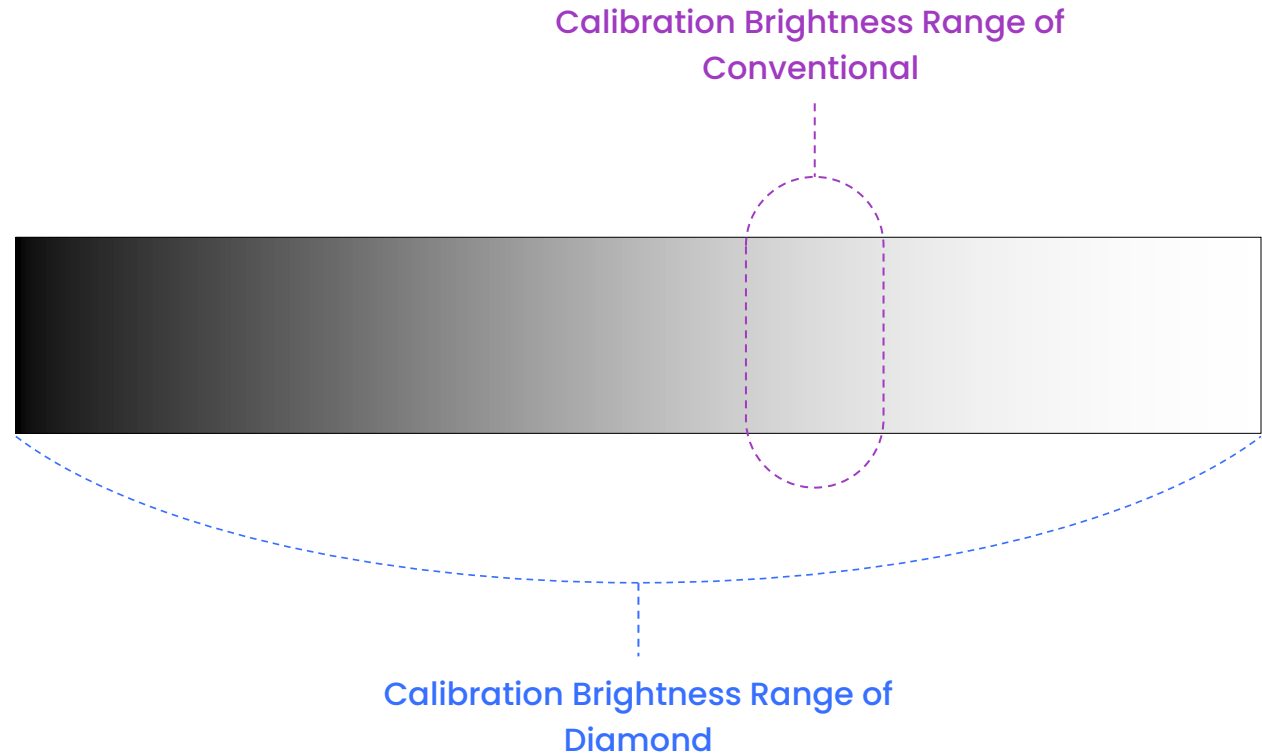


Full Grayscale Calibration

A clean image with no noise at any brightness level

What is Calibration?

LED lamps have brightness variations, requiring a uniform calibration process. This process is called calibration. Since it is usually done at specific brightness levels, color outside this range may appear inconsistent.



Diamond Specification.

Product	Diamond p1.2	Diamond p1.5	Diamond p1.9
Pixel Pitch	1.26 mm	1.58 mm	1.9 mm
Brightness	HyCon 3,000 nit	HyCon 3,000 nit	HyCon 3,000 nit
Module Size	152 x 342 mm	152 x 342 mm	152 x 342 mm
Module Resoulution	120 x 270 px	96 x 216 px	80 x 180 px
Panel Size	608 x 342 mm	608 x 342 mm	608 x 342 mm
Panel Resolution	480 x 270 px	384 x 216 px	320 x 180 px
Contrast Ratio	20,000 : 1	20,000 : 1	20,000 : 1
Refresh Rate	3,840 Hz	3,840 Hz	3,840 Hz
Viewing Angle	178° (H,V)	178° (H,V)	178° (H,V)
Weight	40 kg/sqm	40 kg/sqm	40 kg/sqm
IP Rating	IP65	IP65	IP65
Working Temperature	-20~60°C	-20~60°C	-20~60°C
Humidity	10~90%	10~90%	10~90%
Maintenance	Front & Rear	Front & Rear	Front & Rear
Power Consumption	Max. 720 Avg. 240 w/sqm	Max. 720 Avg. 240 w/sqm	Max. 720 Avg. 240 w/sqm
Input Voltage	AC100~240V 50/60Hz	AC100~240V 50/60Hz	AC100~240V 50/60Hz
Life Span (hours)	100,000 hours	100,000 hours	100,000 hours
Grayscale	22 bit	22 bit	22 bit

Headquarters · Factory

Gu-am industrial complex, 315,
Hyuam-ro 392beon-gil, Nam-myeon,
Yangju-si, Gyeonggi-do, Korea

+82 2 6339 3970
info@impactrum.com

Impactrum USA

17550 Gillette Ave, Irvine, CA 92614
+1 408 315 4829
cw@impactrum.com

+1 714 943 0110
peter@impactrumusa.com

Impactrum Japan

Eco Device
大阪府吹田市垂水町3-4-9

+81 6 6170 2950
Fax 06 6170 2957
junsuk@eco-device.com

Impactrum Thailand

455 Moo 10, Thaparak T Bangpla
A Bangplee Samutprakarn
10540 Thailand

+66 80 750 5016
pathos294007@gmail.com