

# Mini-LED Boards

Mini-LED board package Includes both the Main Board and Mini-LED driver.

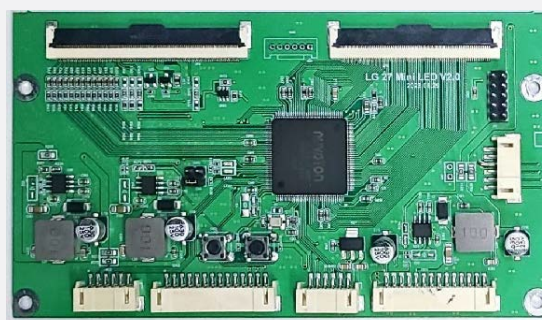
## Compatibility

- LG Display: LB315WR4-SJA1 (31.5") and LM270WR8-SSE1 (27")
- Innolux: GK173VB-01B (17.3") and GK133VB-01A (13.3")



### Main Board

An advanced TFT LCD Monitor Control Board. This design enables a full conventional LCD monitor and video & audio replacement with a large size Active Matrix LCD module.



### Mini-LED driver

This is suitable for a 27-inch Mini-LED with 1,560 blocks and can be modified with a different number of blocks.

## Main Board specification

UHD(3840x2160, 4096x2160) resolution
DMI 2.1 input (Max 144Hz) x 2Port
DP 1.4 input (Max 144Hz) x 2Port
USB type -C port : USB-C with DP Alt 1.4 / PowerDelivery up to 90W
USB Host x 2
Audio Stereo Output x 1
Speaker Output (10W x 2)
RS232 Control port x 1
5V external power / max 1A (for Fan) x 1
Local Dimming control (for mini led backlight) up to 2K block
HDR(High Dynamic Range)1000 function
FREESYNC (30Hz ~ 144Hz) function

## Mini-LED Driver specification

Item	Symbol	Spec.	Unit
Input Voltage	VLED	24 ~ 28	VDC
Input Current	LED	~ 4	LDC
LED String Current	Is	6~8	mA
LED String Voltage	Vs	5.4 ~ 5.8	V
Power Consumption	Pbar	60 ~ 63.4	Watt
LED Lifetime	LED_LT	30000 ~	Hrs